

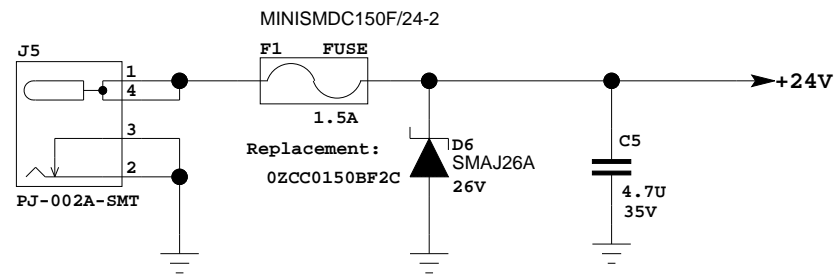
BB9G45 v1.1 - Base Board for PM9G45

board size: 165x104 mm

BB9G45 v1.1 release notes:

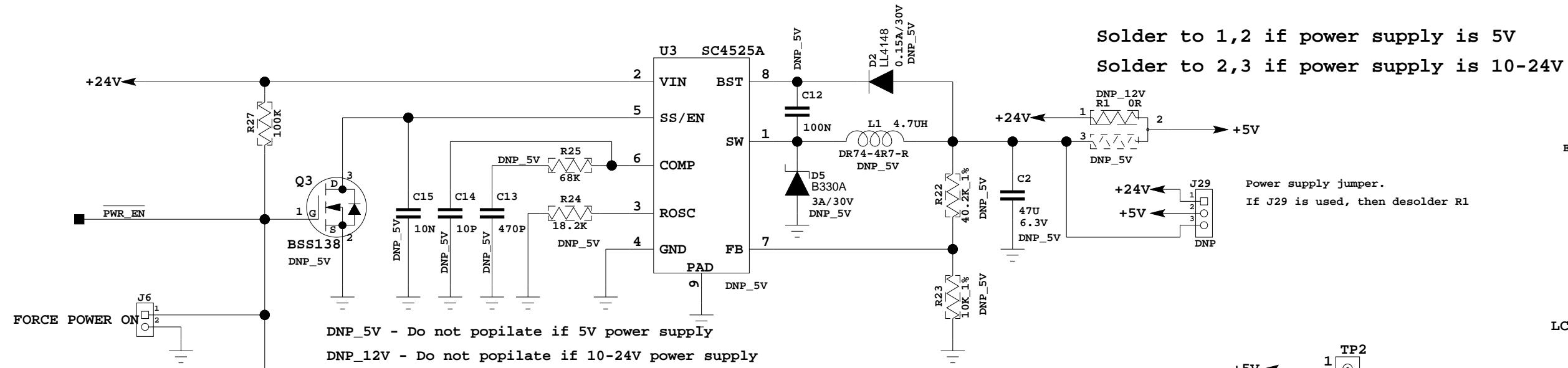
- changed converter 5V to 3.3V
- the input power supply can be 5V or 10-24V (selectable)
- added linear regulator for permanent 3.3V
- added buzzer
- added LEDs for 5V and 3.3V
- pin 5 of U9, U12 connected to 5V
- U3 changed from ZX62D-AB-5P8 to ZX62RD-AB-5P8
- added RS-485 transceiver
- LCD Display wired RGB instead of BGR

DC 5V

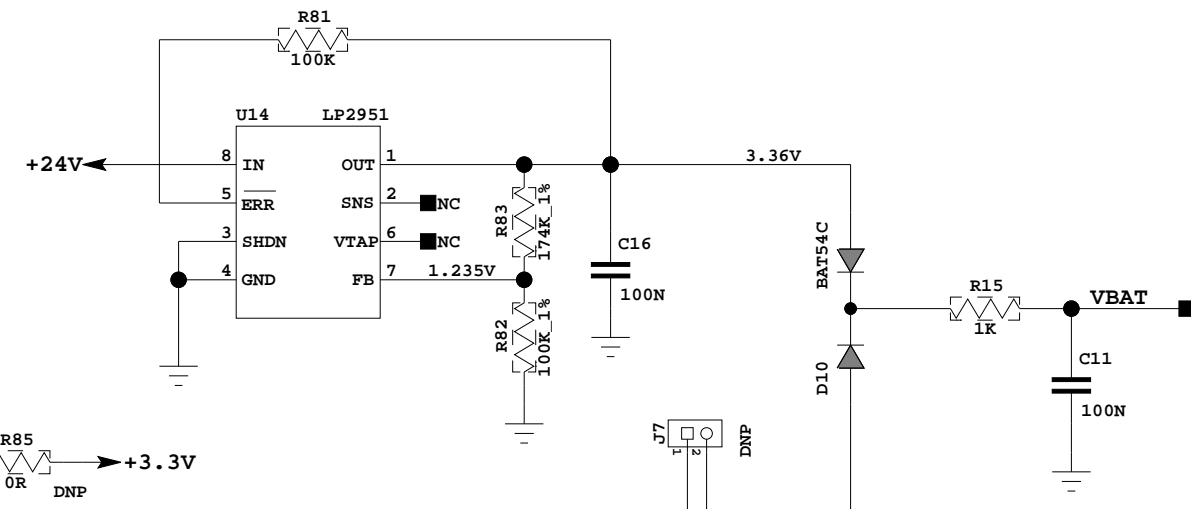
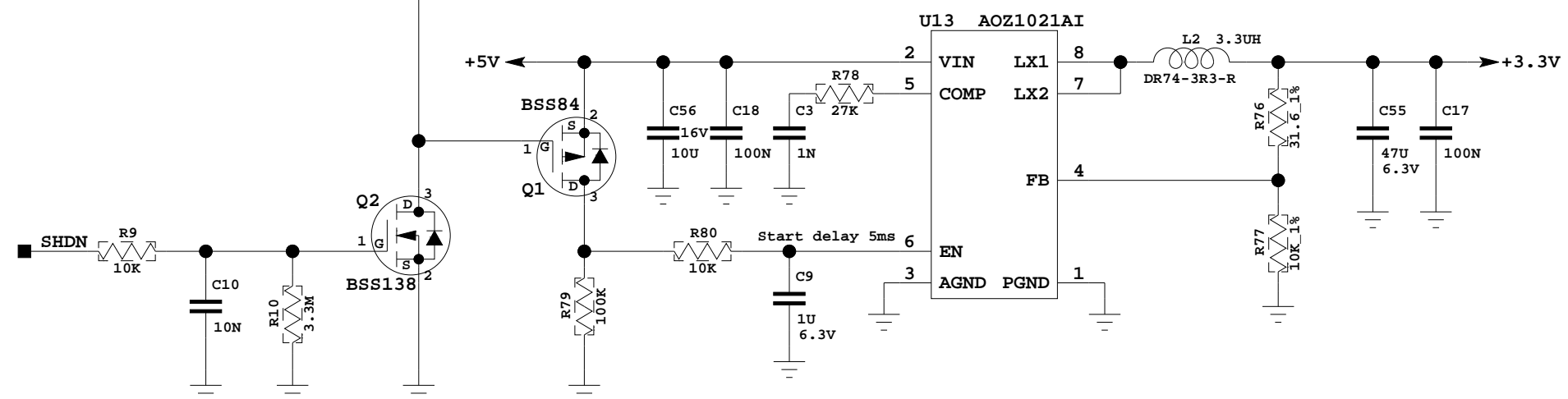


Converter 10-24V to 5V

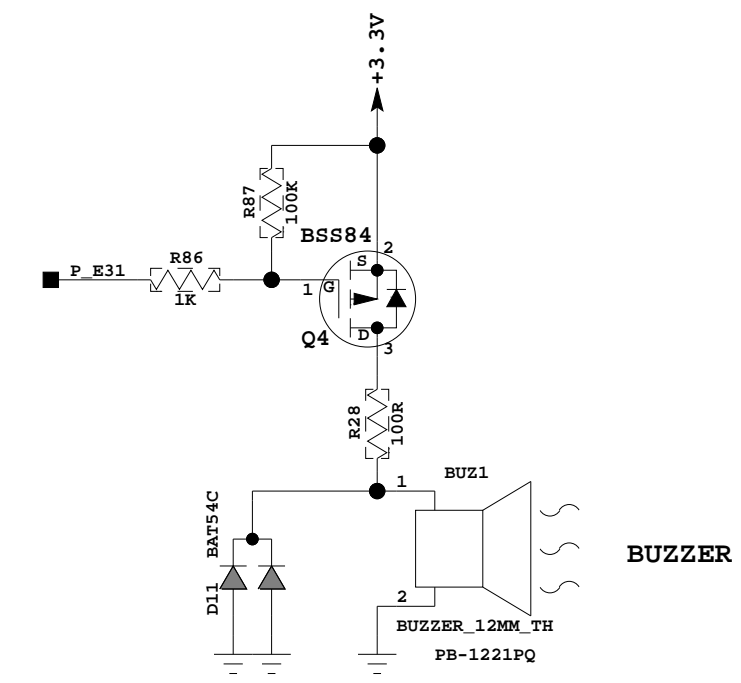
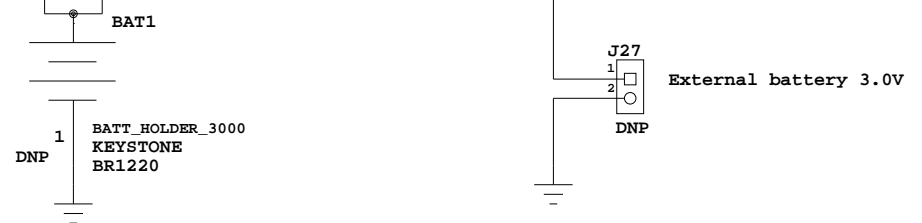
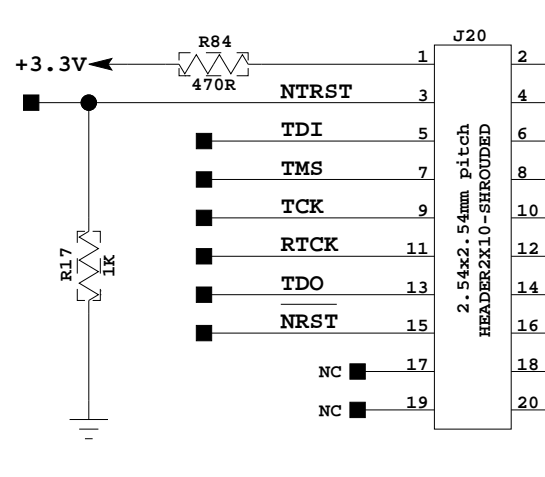
(it is possible to bypass the 10-24V to 5V converter and to supply the board with 5V)



Converter 5V to 3.3V

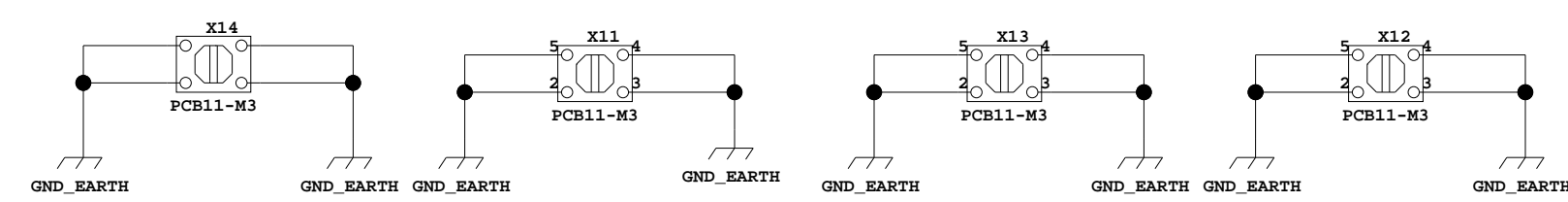
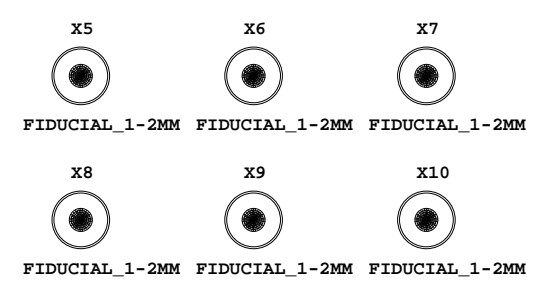
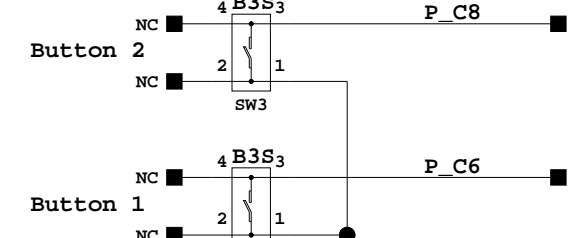
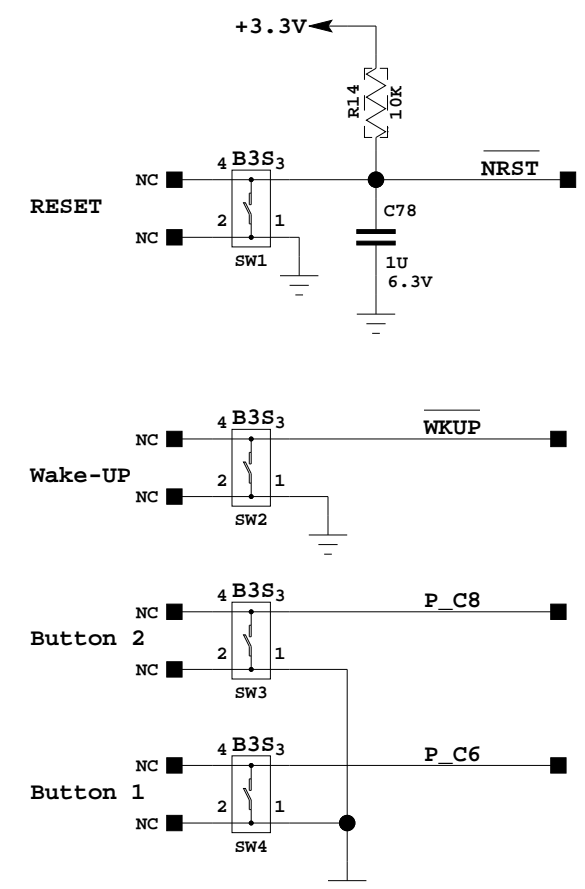
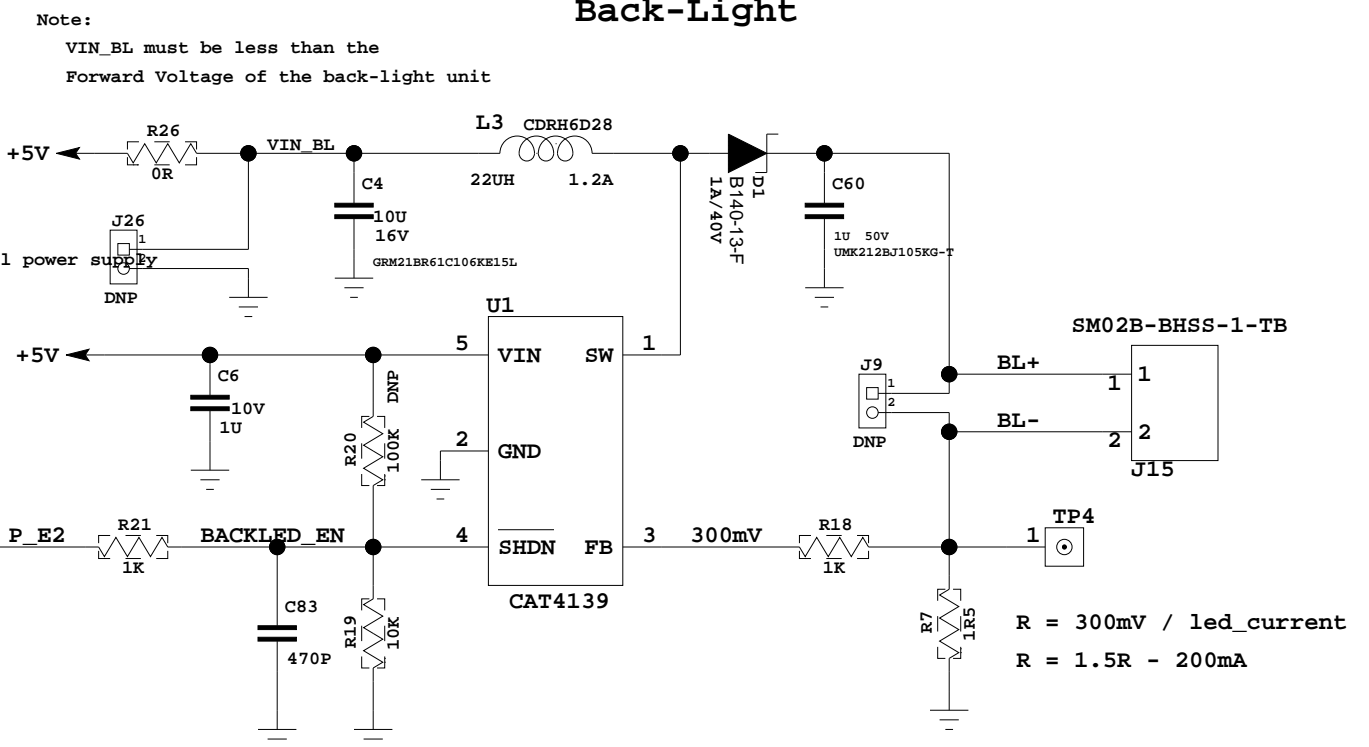


JTAG



BUZZER

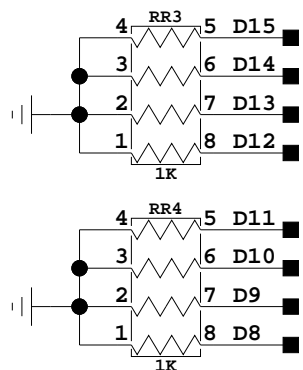
Back-Light



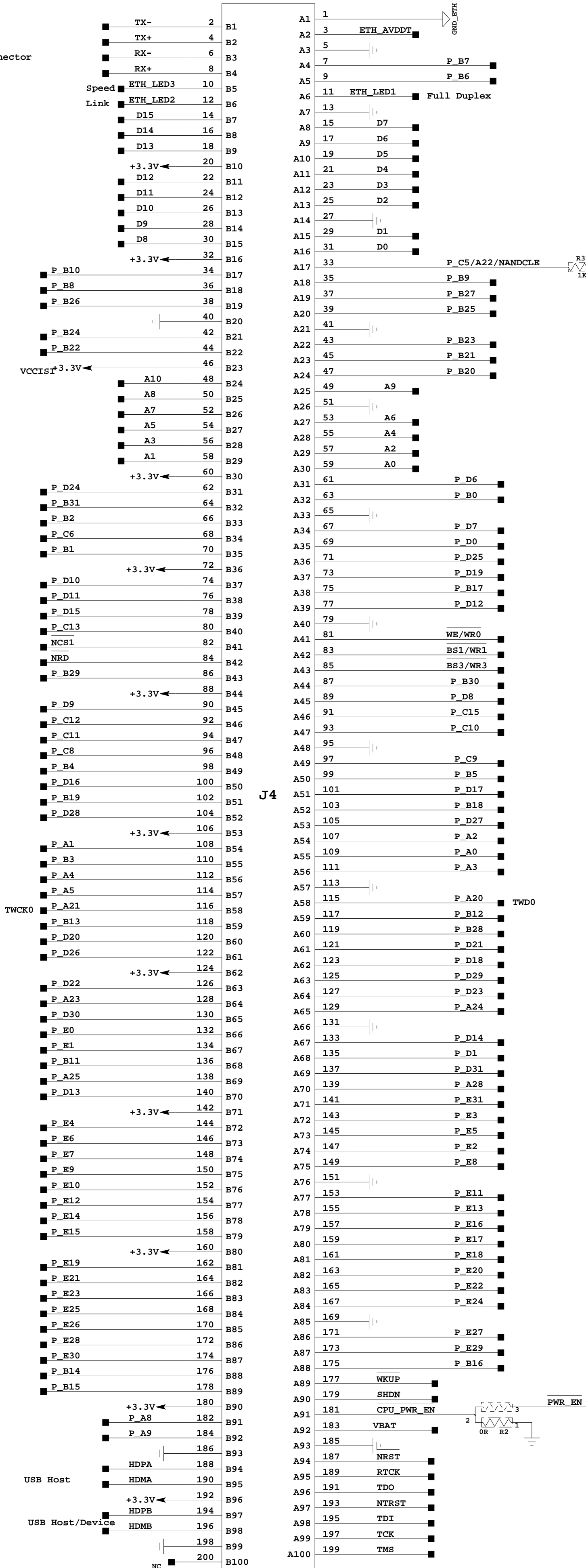
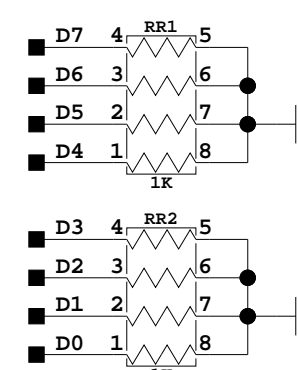
2.5V PCB SODIMM200 CONNECTOR

Tyco 1473005-1, board to board 2.9mm

Place close to 200-pin connector

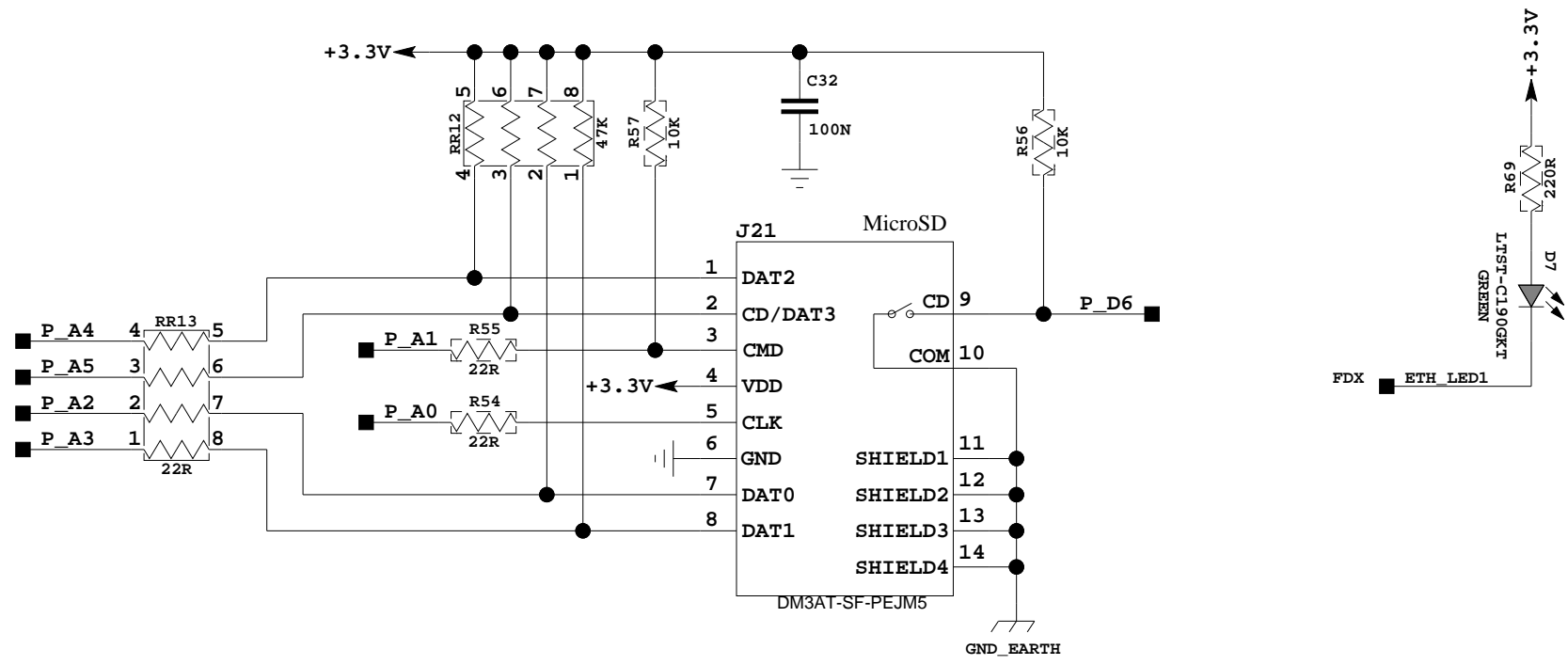


Place close to 200-pin connector

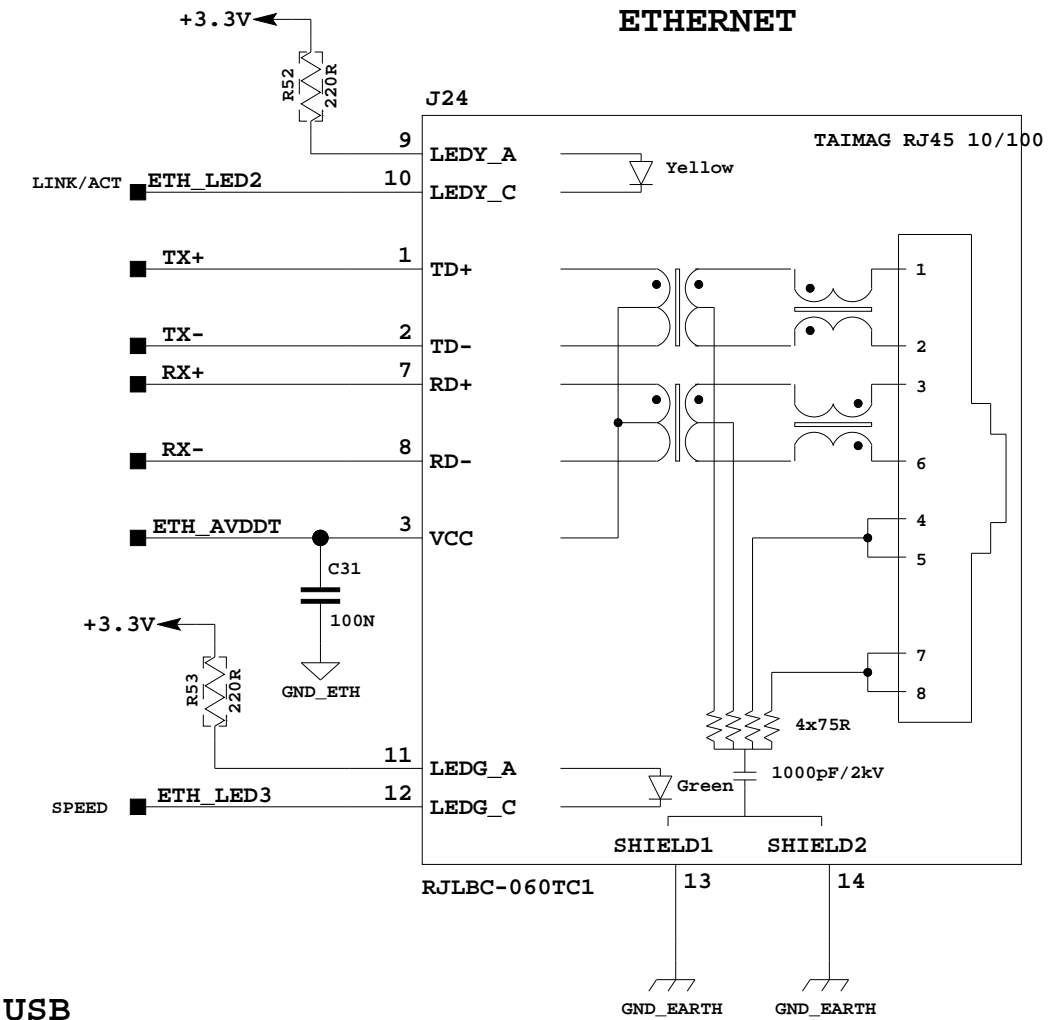


200 PIN HEADER 2.5V SODIMM CON

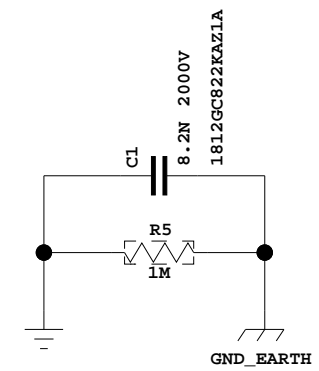
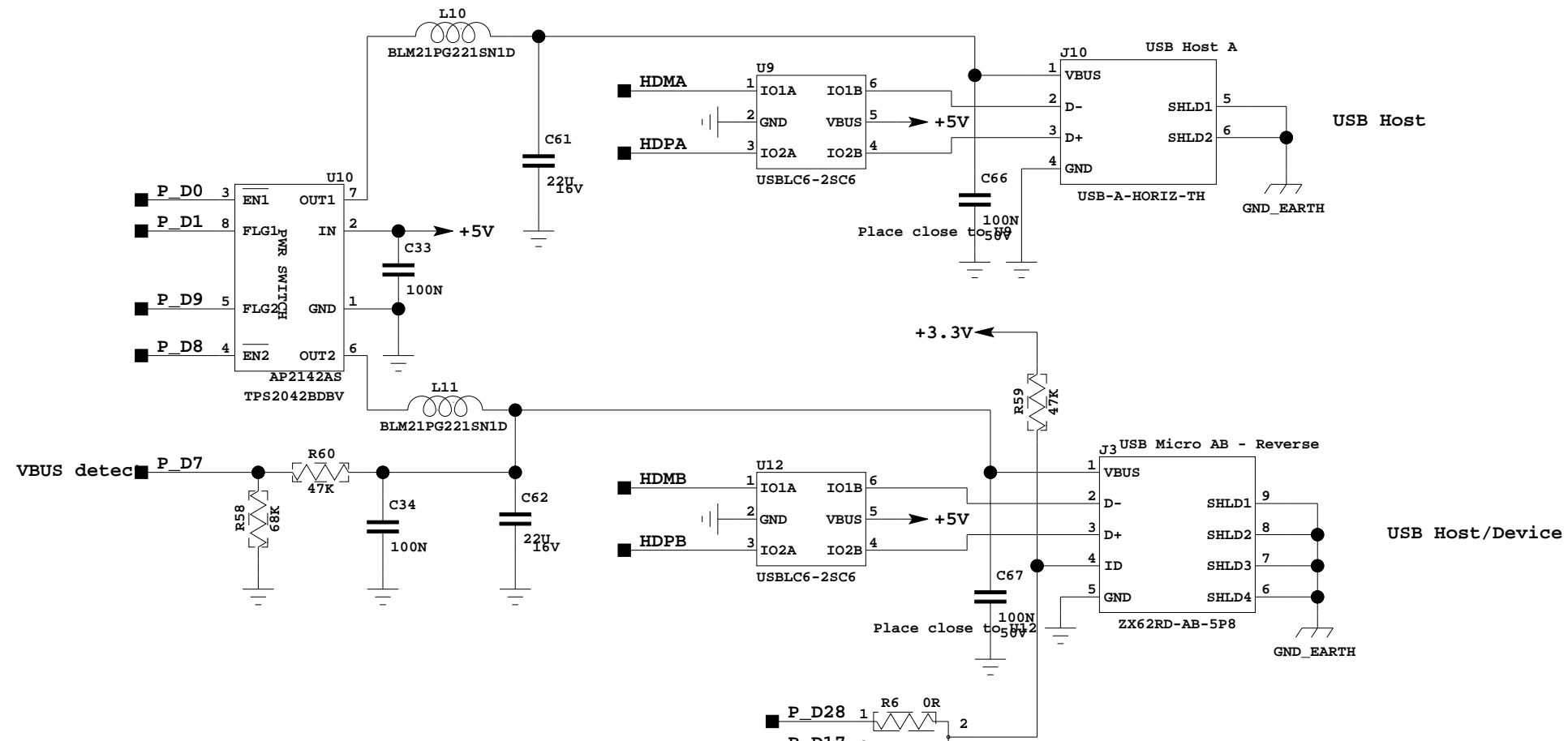
MMC / SD



ETHERNET

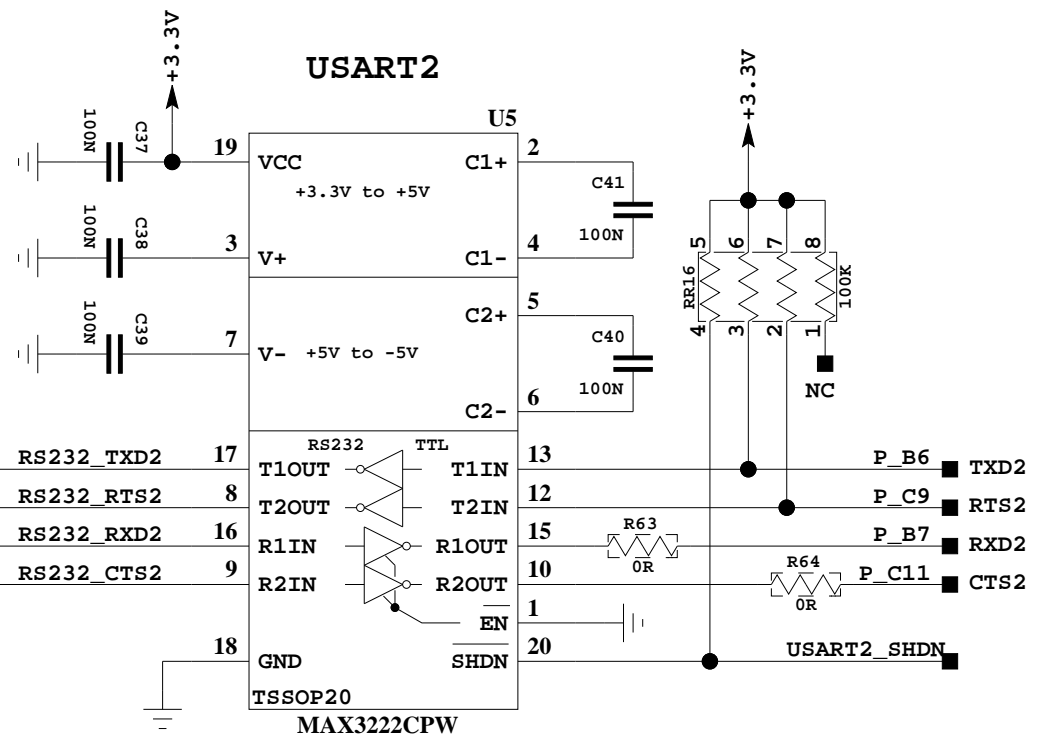
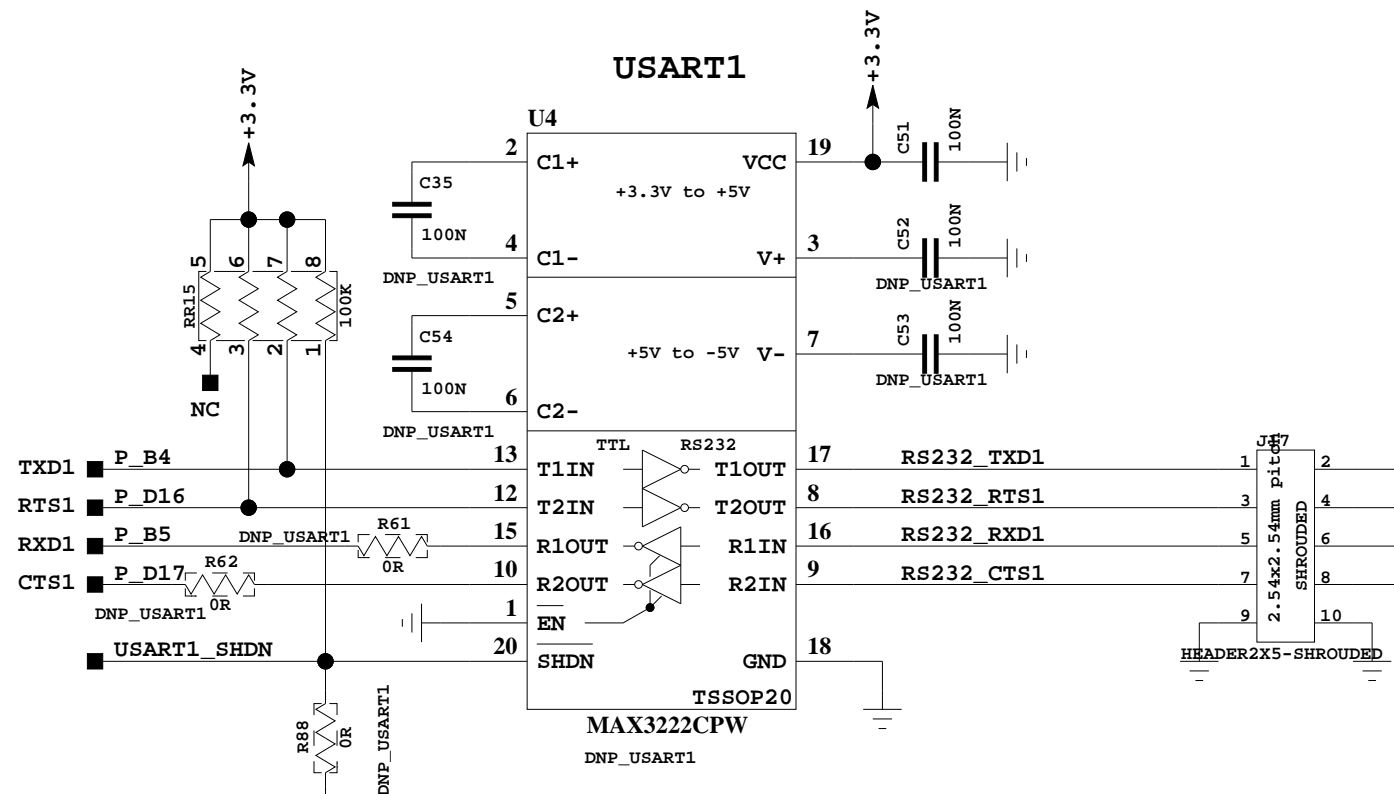
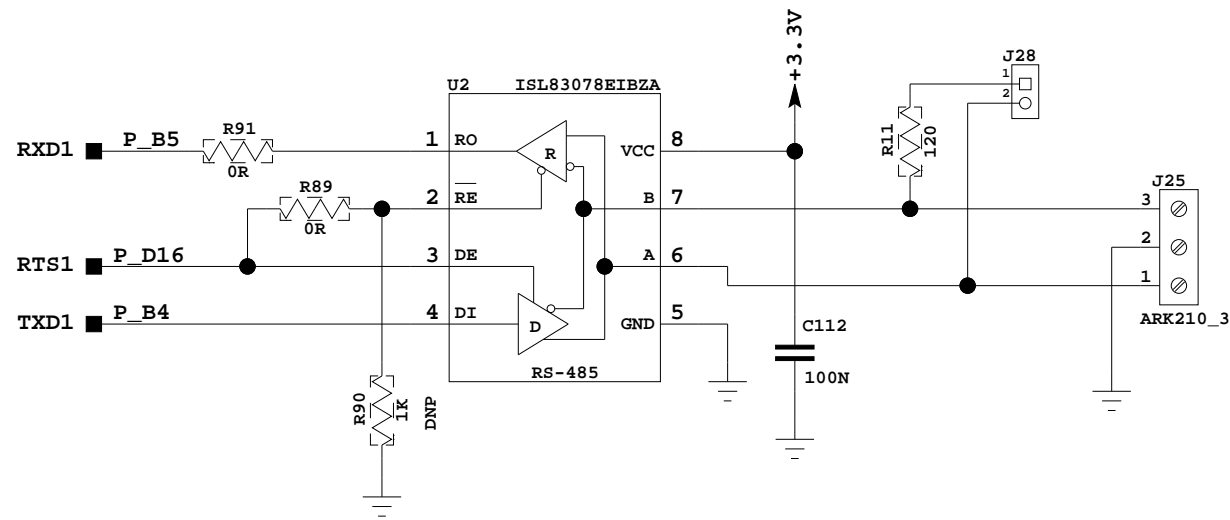
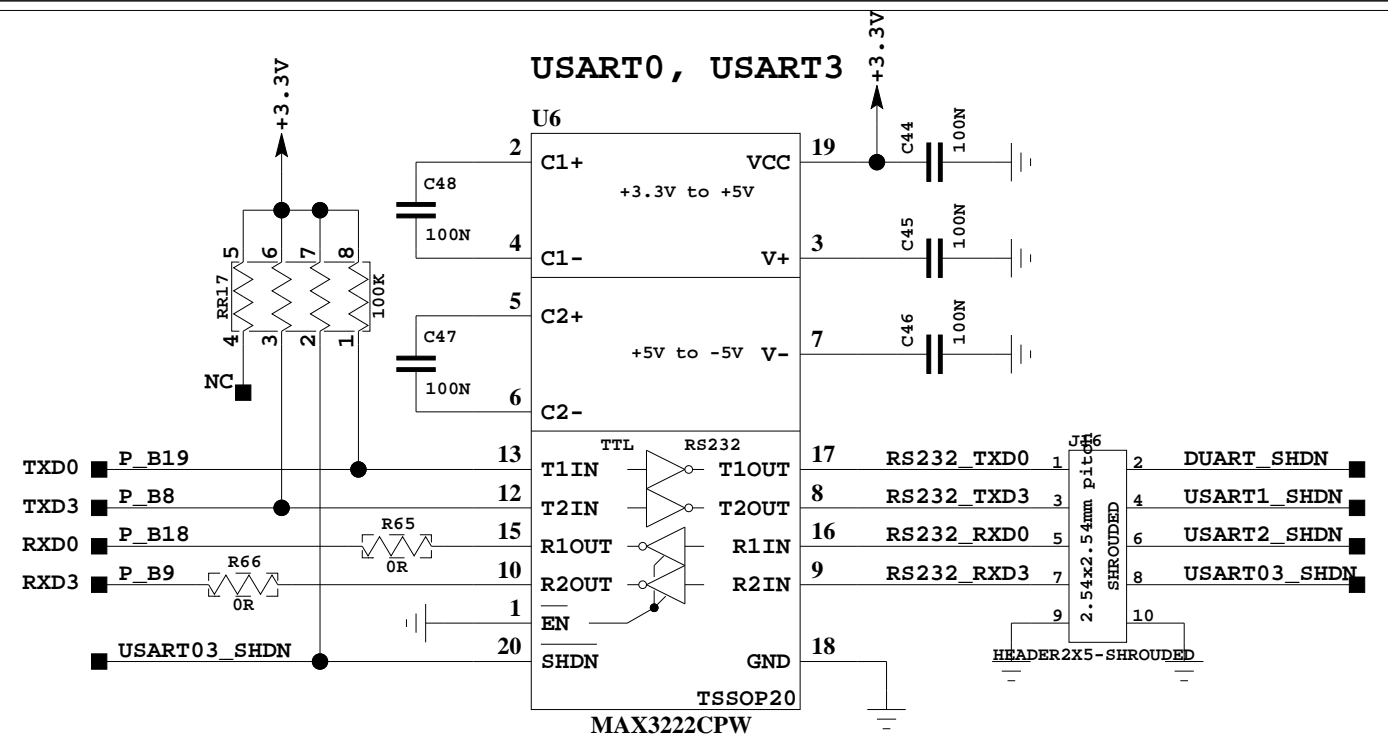
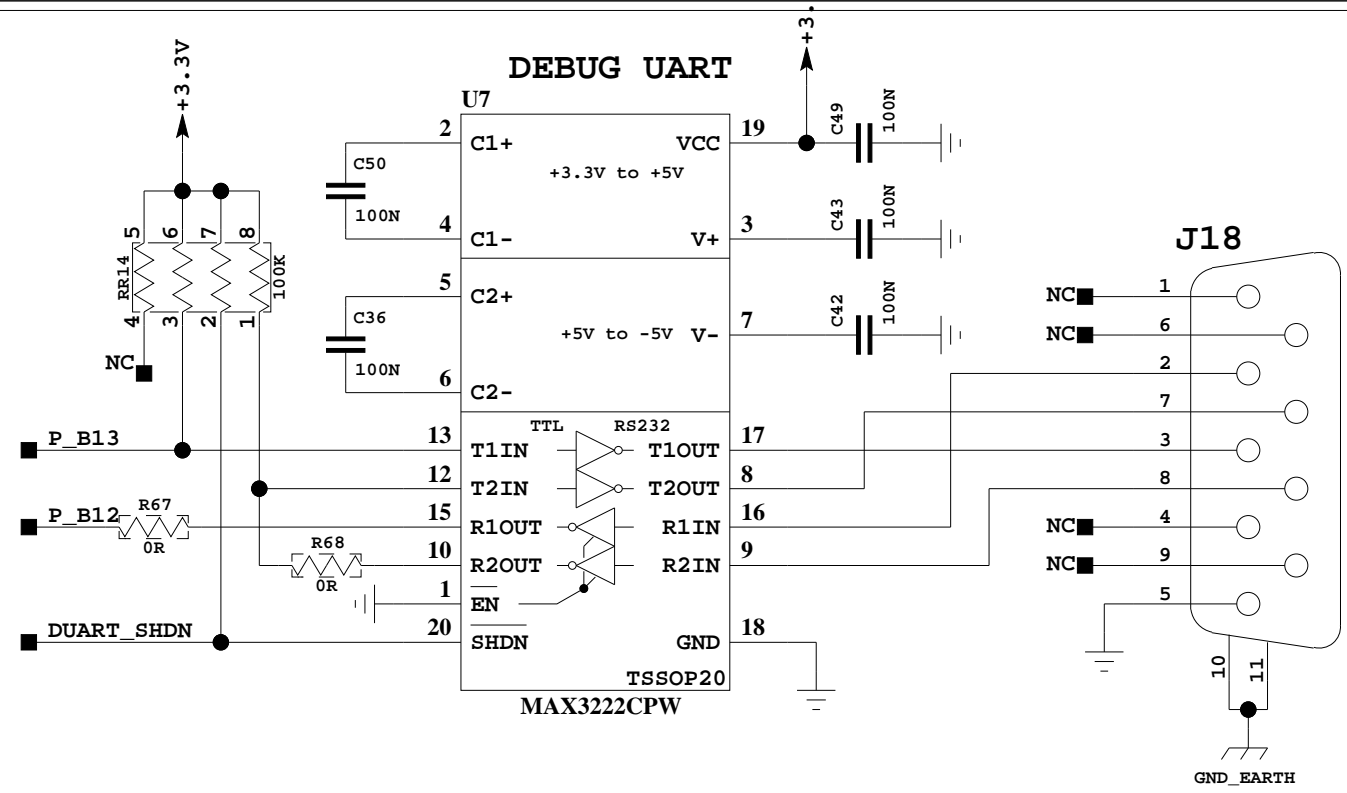


USB

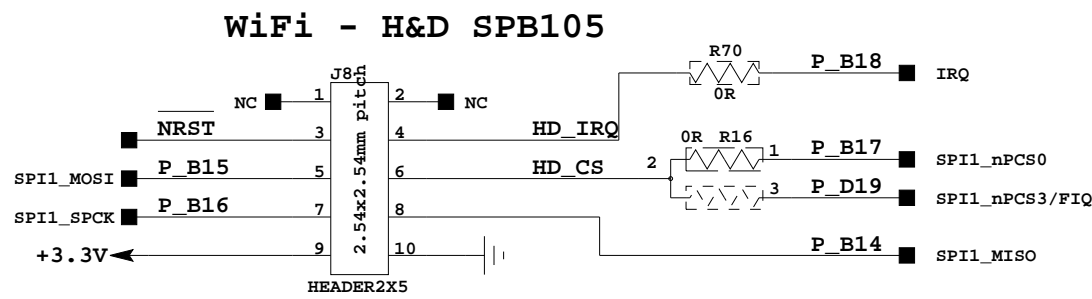
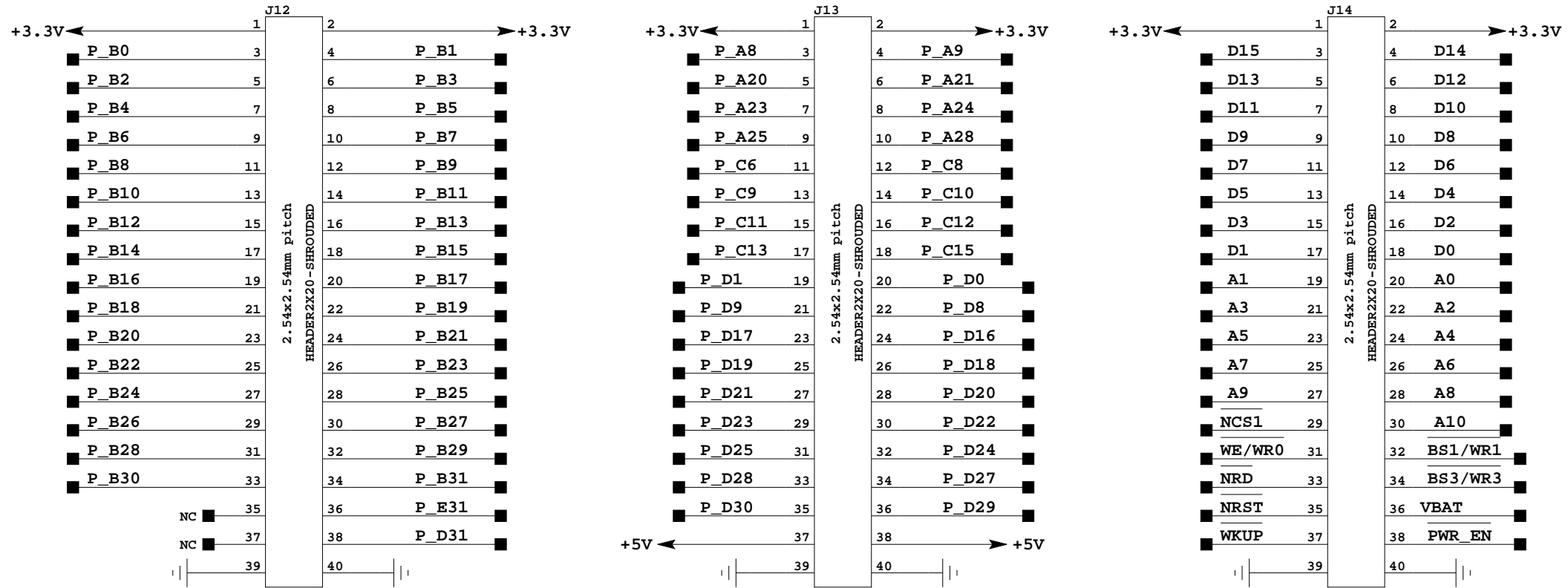


If P_D17 is used, then do not populate R62

Title: BB9G45		
Size A3	Document: MMC, ETH, USB	Rev. 1.1
Date:	Sheet 4 of 6	



Extension I/O



Note: Populate either SPB105 or SPB106
 Note: SPB105 is only for evaluation

